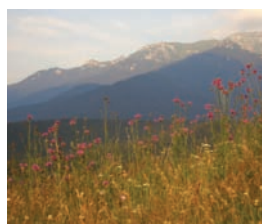
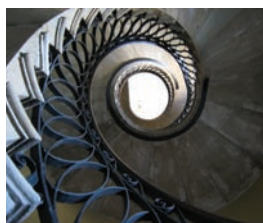


I · N · T · B · A · U

International Network for Traditional Building, Architecture & Urbanism

PATRON: HIS ROYAL HIGHNESS THE PRINCE OF WALES



I · N · T · B · A · U

International Network for Traditional Building, Architecture & Urbanism
PATRON: HIS ROYAL HIGHNESS THE PRINCE OF WALES

Introduction to INTBAU

INTBAU – The International Network for Traditional Building, Architecture & Urbanism – is a worldwide organisation dedicated to the support of traditional building, the maintenance of local character and the creation of better places to live.

Established in 2001, INTBAU is an active network of individuals and institutions who design, maintain, make, study or enjoy traditional building, architecture and places. INTBAU's growing membership consists of approximately 5,000 people from more than 100 countries.

By education and training in traditional architecture, urbanism and the building crafts, we encourage people to maintain and restore traditional buildings, and in particular to create new buildings and places that contribute to traditional environments and improve the quality of life in cities, towns and villages around the world.





INTBAU welcomes all those who appreciate the traditional built environment into its network. We strive to offer our members the unique combination of:

- a **network** of like-minded people from around the world, sharing thoughts and ideas for the advancement of skills and specialist knowledge;
- **wisdom** in the form of a collective awareness and understanding of the diverse issues facing tradition today at both local and international levels;
- **vision** to lead and to inspire others to be involved in the affirmation of tradition as an essential part of modern progress;
- **continuity** in terms of sustainability, craftsmanship and living heritage.



INTBAU's international network is administered by its UK Chapter, which in turn is governed by its trustees.

HRH The Prince of Wales is Patron of INTBAU UK and of the international network. INTBAU is a subsidiary and a sister charity of The Prince's Foundation for the Built Environment.



ARCHITECTURE

INTBAU supports traditional architecture through its publications, urban projects and building skills programmes. It is our belief that 'traditional buildings and places maintain a balance with nature and society that has been developed over many generations' (INTBAU Charter). As part of its commitment to support the creation of new traditional buildings INTBAU has established a peer-reviewed body, The INTBAU College of Traditional Practitioners, which is formed of outstanding architects, urbanists, artists and academics who have been producing high quality work for a minimum of 5 years. Further information on the College follows on page 9.



URBANISM

INTBAU organises urban planning workshops in collaboration with its Chapters and with other organisations worldwide. These four-day intensive workshops are known as 'charrettes'. The charrette objective is to create a masterplan for the improvement of specific elements of an urban area. Masterplans can include proposals for more pedestrian-friendly streets, higher densities of buildings and greater emphasis on local or 'vernacular' architecture.

The charrette process involves local community stakeholders as well as international students and professionals. INTBAU charrettes have been held in Cuba, India, Nigeria, Norway and Romania.



Projects



HERITAGE

INTBAU is committed to the continuity of traditional building crafts and skills, the education of craftsmen and the continued relevance of traditional techniques. Since 2005, INTBAU has offered a series of Traditional Skills Training Programmes. These are designed for individuals, apprentices, young practitioners and architecture and arts students at the beginner, intermediate and advanced levels.

INTBAU currently offers three residential programmes in traditional restoration each summer in Transylvania, Romania. Participants have the opportunity to work on medieval sites and 18th century vernacular cottages, learning about a unique building style where methods have not fundamentally changed for centuries.



ACADEMIA

INTBAU publishes books on architecture and urbanism. So far two books have been produced, *Tradition Today* and *The Venice Charter Revisited*. Both are collections of essays and both are endorsed by our Patron in the UK, HRH The Prince of Wales. INTBAU publications are available for purchase online (www.intbau.org) and in all good bookshops.



INTBAU has approximately 5,000 members based around the world. The membership includes architects, urban designers, academics, heritage workers and individuals with a passion for the traditional built environment.

Members communicate with one another via email groups and through the INTBAU website. The connections formed allow members to have an impact on issues concerning heritage and the built environment locally as well as nationally. With a membership spread across more than 100 countries, INTBAU also gives its members an international voice.

INTBAU has established Chapters in nearly 20 countries, including Australia, Canada, Cuba, Cyprus, Estonia, Germany, India, Iran, Ireland, Italy, the Netherlands, Nigeria, Norway, Poland, Romania, Russia, the United Kingdom and the United States of America. This list is constantly growing and applications have been received to set up new Chapters in a number of countries, including Brazil, China and Spain.

Each INTBAU Chapter has an elected Head who coordinates members and organises projects and events. Each Chapter is also represented on The International College of Chapters (The ICC), a body which is formed of Chapter Heads and the Chair of INTBAU. The ICC meets at least once per year to advise on the charity's future projects and policy.



General Membership



In March 2010, to mark the occasion of its ninth birthday, INTBAU introduced a new membership scheme offering additional categories and benefits.

- **Associate Members** receive a quarterly e-newsletter and are part of a forum for discussion. There is no membership fee.
- **Members** receive a monthly e-newsletter; an annual magazine; discounts for INTBAU events; 50% reduction on subscriptions to the *Journal of Urbanism*; entry into draws for places on INTBAU courses; and invitations to member exclusive events such as bespoke architectural tours, lectures and visits to landmark buildings. The membership fee is £25 per annum.
- **Friends** receive the benefits listed above as well as the use of the INTBAU Library at Charlotte Road (London) and complimentary INTBAU publications. The membership fee is £200 per annum.

All income generated from membership helps fund INTBAU's core activities. Registering as an Associate Member, Member or Friend of INTBAU is simple, and can be done securely online via our website.



Professional Membership

In 2005 INTBAU launched a professional membership scheme for practitioners in traditional urban design, architecture and the building arts. This group is called The INTBAU College of Traditional Practitioners (The ICTP), and is now a peak international professional body whose members have produced excellent work in their field over at least 5 years of practice. The membership consists of architects, urbanists, artists and academics.

Work produced by ICTP members speaks to an essential part of INTBAU's mission: the continuity of tradition. Practitioners create beautiful buildings and places for modern use which draw upon the language of tradition and its forms in the places where they work.

ICTP members meet annually to discuss their recent projects and to exchange thoughts and ideas. Any professional is invited to apply for membership with a portfolio of their work. The biographies and images of the work of the current ICTP members, as well as more details on how to apply, are all available on the INTBAU website.

INTBAU also offers higher membership to young graduates and professionals who have not yet had 5 years experience. Further information on The INTBAU Young Practitioners (The IYP) is available online.



Support Us

We welcome support from individuals, foundations and the corporate sector. We offer benefits which can be tailored to suit each donor. Benefits can include invitations to gala events, public acknowledgment of support, complimentary INTBAU publications and many more.

INTBAU's work is guided by its members, and the entire network benefits when you:

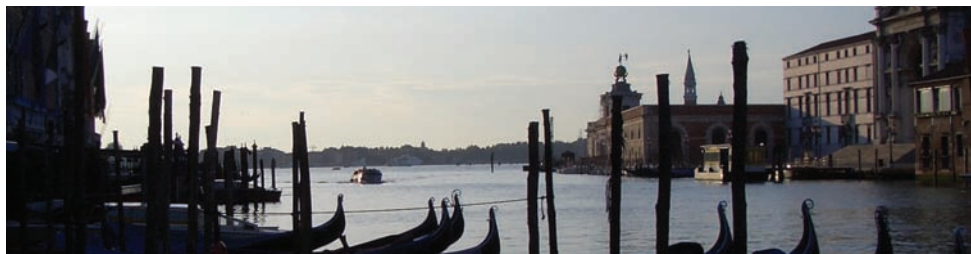
- join as an Associate Member, Member or Friend;
- engage in discussion and debate via the website and email groups;
- attend INTBAU events;
- volunteer some of your time to help a local Chapter.

CONTACT US

Central Office

19–22 Charlotte Road
London EC2A 3SG
United Kingdom

+44 20 7613 8504
intbau.members@intbau.org
www.intbau.org



INTBAU Charter

Traditions allow us to recognise the lessons of history, enrich our lives and offer our inheritance to the future. Local, regional and national traditions provide the opportunity for communities to retain their individuality with the advance of globalisation. Through tradition we can preserve our sense of identity and counteract social alienation. People must have the freedom to maintain their traditions.

Traditional buildings and places maintain a balance with nature and society that has been developed over many generations. They enhance our quality of life and are a proper reflection of modern society. Traditional buildings and places can offer a profound modernity beyond novelty and look forward to a better future.

INTBAU brings together those who design, make, maintain, study or enjoy traditional building, architecture and places. We will gain strength, significance and scholarship by association, action and the dissemination of our principles.

Central Office

19–22 Charlotte Road
London EC2A 3SG
United Kingdom

+44 20 7613 8504
intbau.members@intbau.org
www.intbau.org